

Daytime Provision

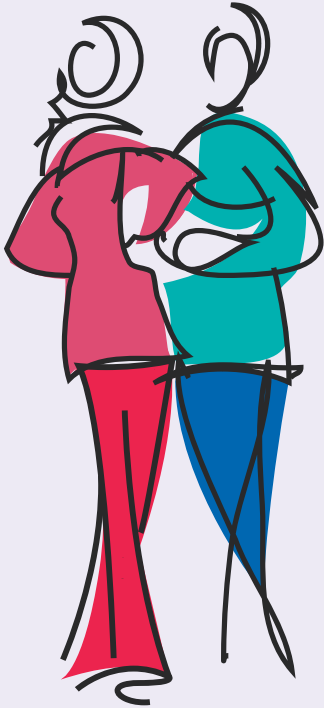


...it's your choice.



so what is Daytime Provision?

Daytime Provision is a support service designed to suit you and your needs. Support is provided on a one-to-one basis where a positive relationship between the provider and the client develops. The service can be activity or community led, for example:



- ~ Domestic skills, such as cooking and managing personal finances
- ~ Making friends in the community
- ~ Attending Adult Education Classes
- ~ Supporting clients back to work
- ~ Or, just going down the pub.



With the hours which I am allocated with my Daytime Provider, Nigel, I go shopping and I use the rest of my hours to get an evening out as well. In the evening I choose to go to the pub for karaoke.

Sometimes I decide to go tenpin bowling or the cinema. I enjoy getting Daytime Provision because it gets me out and I enjoy socializing with other people.

~ *Sam a client*



How do I access this service?

In the first instance contact ASA by either by phone or by calling in to see us (details on the back of this leaflet).

How do I know its right for me?

Each provider is carefully matched with a client to ensure that they can offer the support needed.

How are ASA providers vetted?

All providers are subject to checks including health, employment reference and criminal records. Providers are then interviewed and if successful an ASA worker completes a Home Assessment with the provider.

What if my current circumstances change?

A regular relationship with ASA is maintained to ensure we can respond to your changing needs.

How are Day Time Providers trained?

All providers receive an initial two day training programme followed by regular on-going training provided by ASA.

How are Day Time Providers supervised?

Regular visits are made to the provider by an ASA worker to evaluate them.

frequently
asked questions...

where to contact ASA...

Head Office

Railton House
Sleaford Business Park
Sleaford NG34 7EQ

Tel. 01529 416270

Fax. 01529 414012

Email. enquiries@asaorg.co.uk

Website. www.asaorg.co.uk

We also have offices in:

- ~ Louth
- ~ Boston
- ~ Lincoln
- ~ Spalding
- ~ Gainsborough