

At Home Day Service



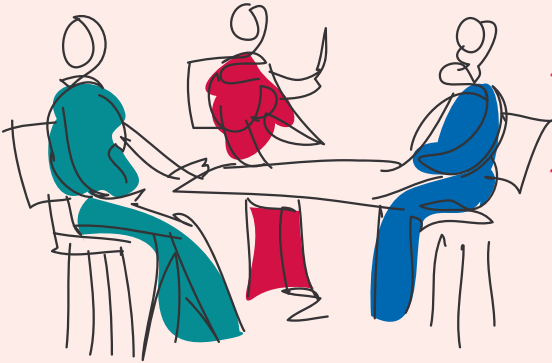
...it's your choice.



so what is At Home Day Service?

A day service based in the providers home for people who have dementia or anyone else who would benefit from the uniqueness of this small group based activity. These may include:

- ~ Maintenance of people's interests.
- ~ Provides a break for the family carer.
- ~ The service is provided within a 1:3 ratio.
- ~ Helps maintain links with the community.



“ The service has been invaluable, in both supporting my husband with a day service and giving me respite from my caring role. ”

~ *Client's partner*

“ The service is the highlight of my week, I do not have many visitors, and I am unable to go out, so going to the providers one day a week is very important. I enjoy the activities and the lunch. ”

~ *Client*

“ The service is unique, and the providers wonderful, I am very happy with this service and I am please to have found it. ”

~ *Family member*

How can I access the service?

In the first instance contact ASA by phone or by calling into our office (details on the back of this leaflet).

How do people get to the providers home?

Transport is provided through a volunteer agency or by a local taxi company.

How are the At Home Day Service Providers trained?

All providers receive an initial training package related to the work they will be doing and thereafter regular training sessions are provided by ASA.

How are At Home Day Service providers vetted?

All providers are subject to checks including health, employment reference and criminal records. Providers are then interviewed and if successful an ASA worker completes a Home Assessment with the provider.

How are At Home Day Service providers reviewed?

Regular visits are made to the providers' home by the ASA worker to evaluate their work. Also every two years a report about the provider is taken to the ASA Re-Approval Panel.

frequently
asked questions...

where to contact ASA...

Head Office

Railton House
Sleaford Business Park
Sleaford NG34 7EQ

Tel. 01529 416270

Fax. 01529 414012

Email. enquiries@asaorg.co.uk

Website. www.asaorg.co.uk

We also have offices in:

- ~ Louth
- ~ Boston
- ~ Lincoln
- ~ Spalding
- ~ Gainsborough